

NET Reports 3.0 Server Installation guide

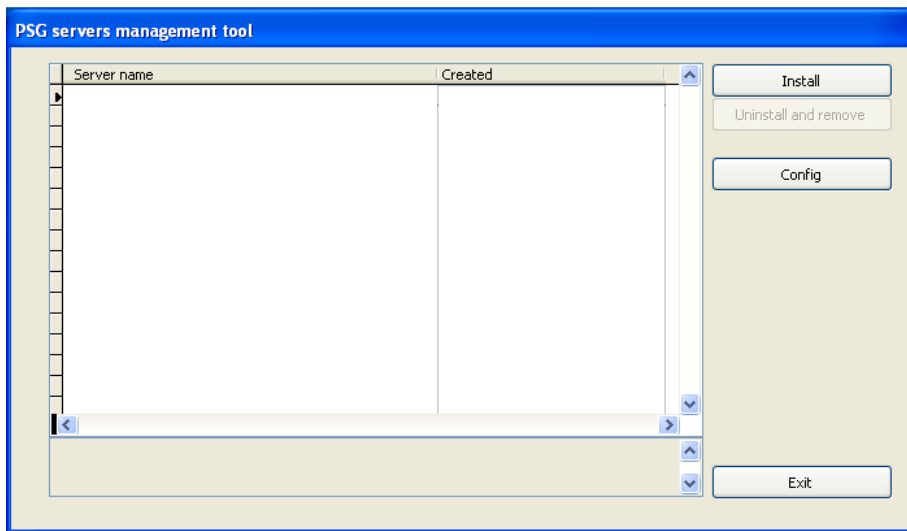
NET Reports 3.0 is build as a client/server application based on PSG 2.0 application server platform. While could be installed on any computer for testing purposes, NET Reports should be installed on a server computer that benefit of maintenance and backup plans.

Install the PSG 2.0 server manager from the installation kit (psg20srvman.zip)

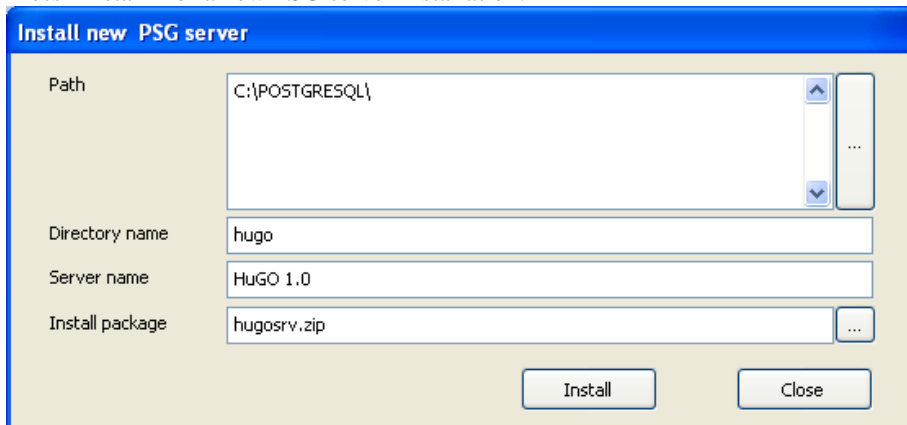
The installation kit need .NET 4.0 framework to be installed, if is not installed will ask for installation at setup, install the .NET 4.0 framework when requested and proceed to PSG 2.0 server manager installation next.

Open the PSG 2.0 server manager application, first time will ask to install SQLite database drivers, accept the installation. SQLite is used for server configuration files and system internal data storage like log files.

PSG 2.0 Server manager console:

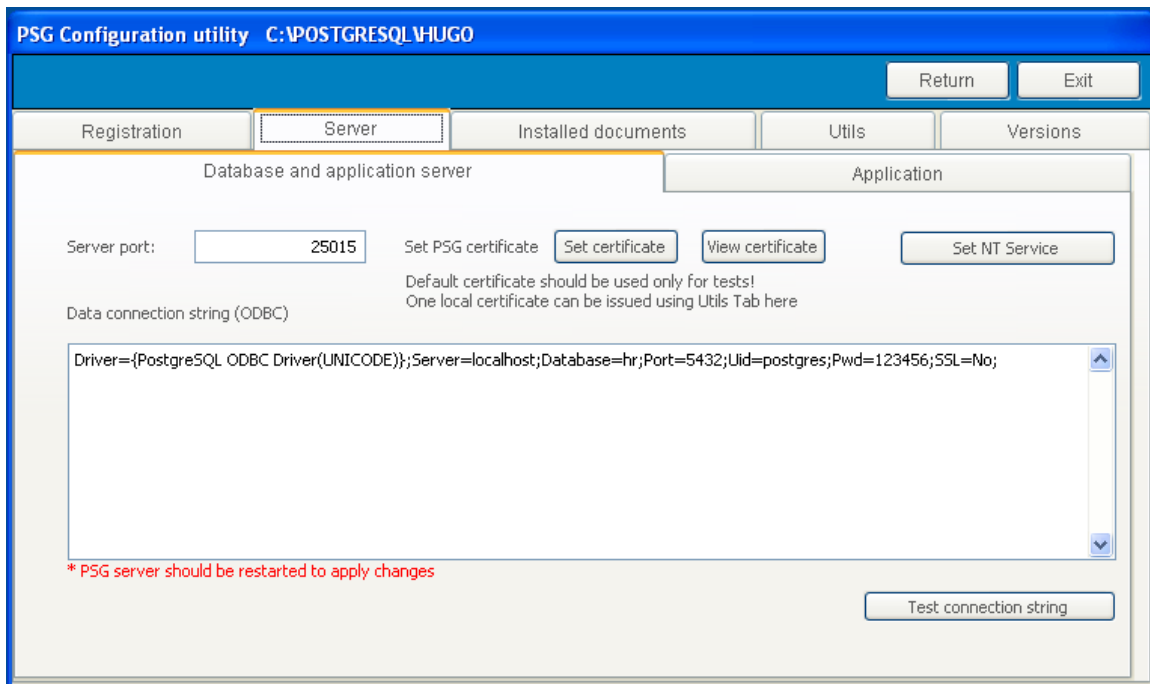


Press "Install" for a new PSG server installation.



Set the server folder path, folder name and server name. Chose the installation package zip (nr30apps.zip) file from the installation CD and press "Install", the NET Reports server will be install.

Press "Config" for NET Reports server configuration.

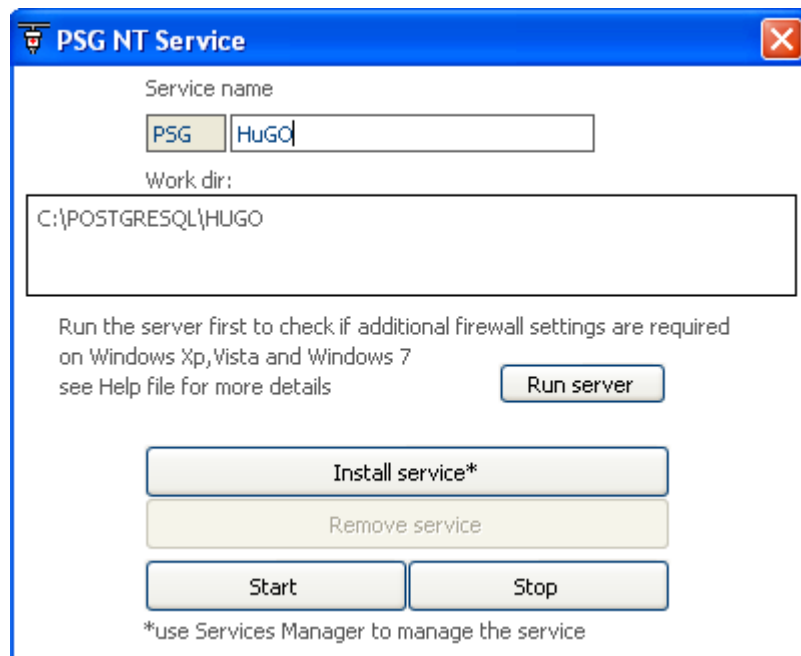


To access the configuration file a password is required, the NET Reports server “administrator” password is used here. Password: qbis

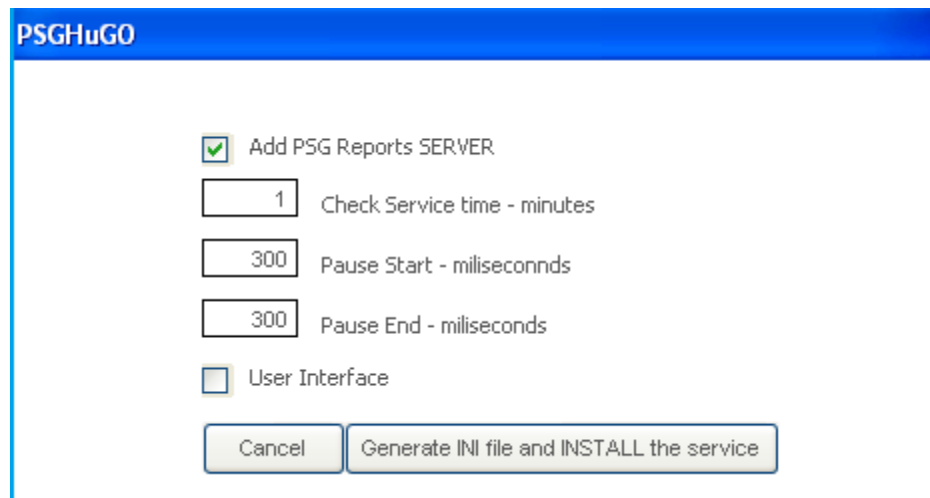
Other necessary configurations:

1. Setting the server windows service

Press “Set NT Service” button on “Database and application server” page.



Follow the instructions and press “Install service” button when ready.
Press “Run server” to check for a firewall setting request (Windows XP).



The image shows a Windows-style configuration window titled "PSGHuGO". It contains several settings:

- A checked checkbox labeled "Add PSG Reports SERVER".
- A text input field containing "1" followed by the label "Check Service time - minutes".
- A text input field containing "300" followed by the label "Pause Start - miliseconds".
- A text input field containing "300" followed by the label "Pause End - miliseconds".
- An unchecked checkbox labeled "User Interface".
- At the bottom, there are two buttons: "Cancel" and "Generate INI file and INSTALL the service".

Press "Generate INI file and INSTALL the service.

The new service can be started from this interface or can be started from Windows control panel/ administrative tools/ services.

Technical support on email at: support@net-reports.net ; support@nedcosafe.com ; support@psgSDK.com

2. Set a security certificate.

NET Reports uses a secured data transfer protocol HTTPS based on SSL AES 128 bit encryption. A certified certificate could be used, but also a self signed certificate could be set and used here.

If the application is used into the local network only there is no need to change the default certificate. However if more security is needed or the application it is used over the internet you can create a new certificate using the "certificate" utility in "Utils" page. Next use the "Set certificate" button to point to the new created security certificate.

3. Server registration

NET Reports application is licensed per user's number on the same server. The license file contains information related to the maximum users number and eventually expire date. The license file is issued per computer hardware (hard drive serial number) or can be issued per hardware key (any USB memory stick can be used). We recommend usage of a hardware key in case you plan to change the server computer into the near future.

Use registration page to create a hardware key and a license request file.

Check the <http://www.net-reports.net/pricing.php> for ordering informations. Prices are per user.

Technical support by email: support@net-reports.net ; support@nedcosafe.com ; support@psgSDK.com

Product page: <http://www.net-reports.net>

NET Reports is licensed by Programming Solutions Group and developed in partnership with NEDCO SAFE and Q-Bis Consult.

www.psgSDK.com
www.nedcosafe.com
www.qbis.ro